

BADET K1058



DESCRIPTION

Two-colour unisex hoodie. Hood with crossed neck and metal eyelets. Contrasting inner hood, drawcord and raglan sleeves. Kangaroo pocket. Cuffs and hem in 1x1 elastane rib knit. Removable label.

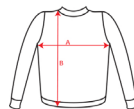
COMPOSITION

50% cotton / 50% polyester, brushed fleece, 280 gsm. Heather grey colour: 55% cotton / 40% polyester / 5% viscose.

SIZES

3/4 • 5/6 • 7/8 • 9/10 • 11/12

SCHEME



QUANTITIES

	Box	Pack
Kids:	25 un.	1 un.

COLORS



SIZES

Kids:	3/4	5/6	7/8	9/10	11/12
WIDTH (A)	33cm	36cm	39cm	42cm	45cm
LONG (B)	44cm	48cm	52cm	56cm	60cm

*[Measured from the edge 1 cm below the sleeves / Measured from the highest point of the shoulder to the end of the garment]

PRINTING TECHNIQUES AVAILABLE

Screenprint
Transfer
Digital transfer
Embroidery fixed
DTF transfer

CERTIFICATES

