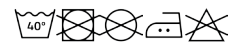


### BADET R1058



#### DESCRIPTION

Two-colour unisex hoodie. Hood with crossed neck and metal eyelets. Contrasting inner hood, drawcord and raglan sleeves. Kangaroo pocket. Cuffs and hem in 1x1 elastane rib knit. Removable label.

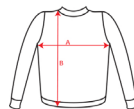
#### COMPOSITION

50% cotton / 50% polyester, brushed fleece, 280 gsm. Heather grey colour: 55% cotton / 40% polyester / 5% viscose.

#### SIZES

XS • S • M • L • XL • 2XL • 3XL

#### SCHEME



#### QUANTITIES

	Box	Pack
Adults:	25 un.	1 un.

#### COLORS



#### SIZES

Adults:	XS	S	M	L	XL	2XL	3XL
WIDTH (A)	49cm	52cm	55cm	58cm	61cm	65cm	69cm
LONG (B)	65cm	67cm	69cm	71cm	73cm	75cm	77cm

\*[Measured from the edge 1 cm below the sleeves / Measured from the highest point of the shoulder to the end of the garment]

#### PRINTING TECHNIQUES AVAILABLE

Screenprint  
Transfer  
Digital transfer  
Embroidery fixed  
DTF transfer

#### CERTIFICATES

